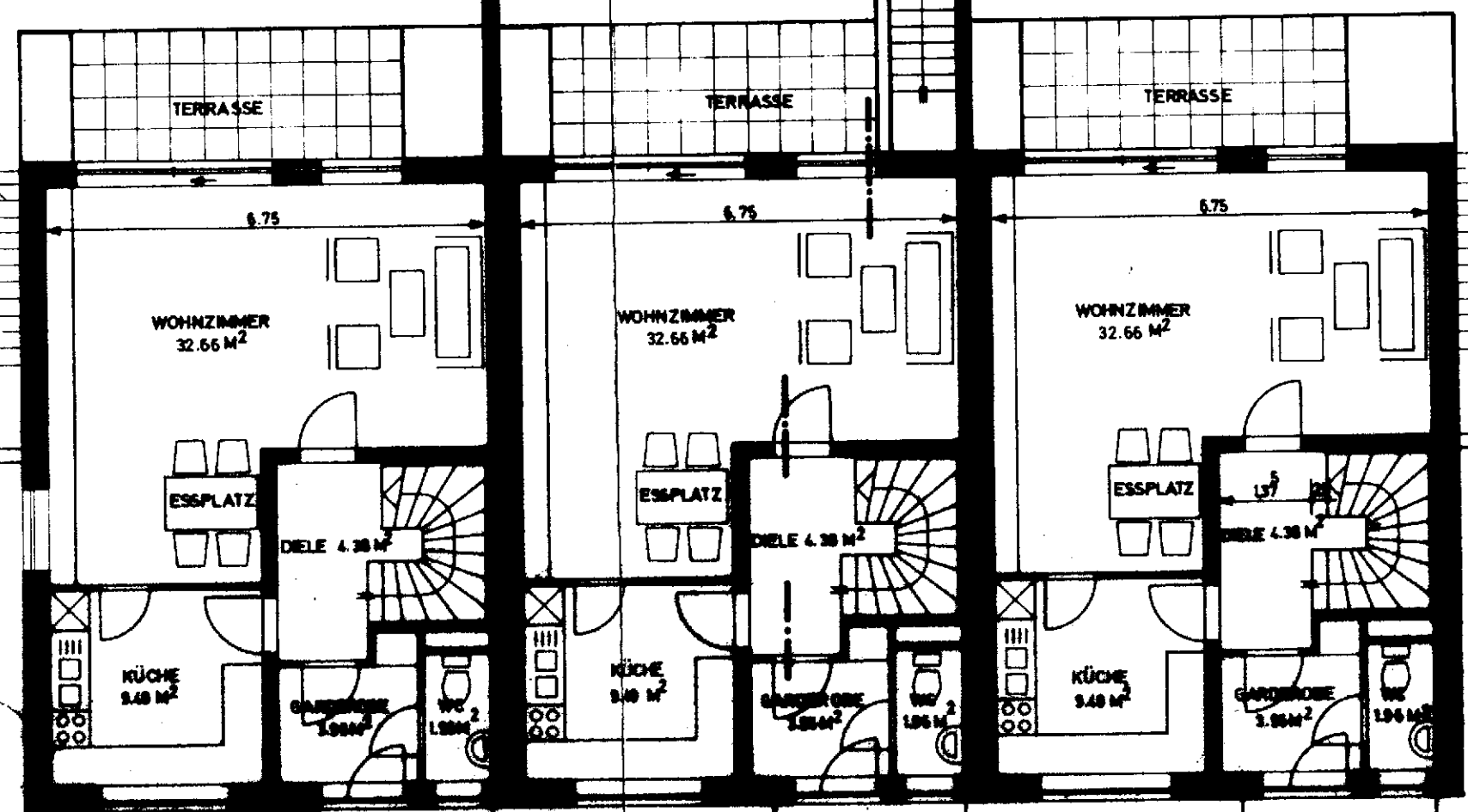


LINKE GIEBELANSICHT

0673

0674

0675

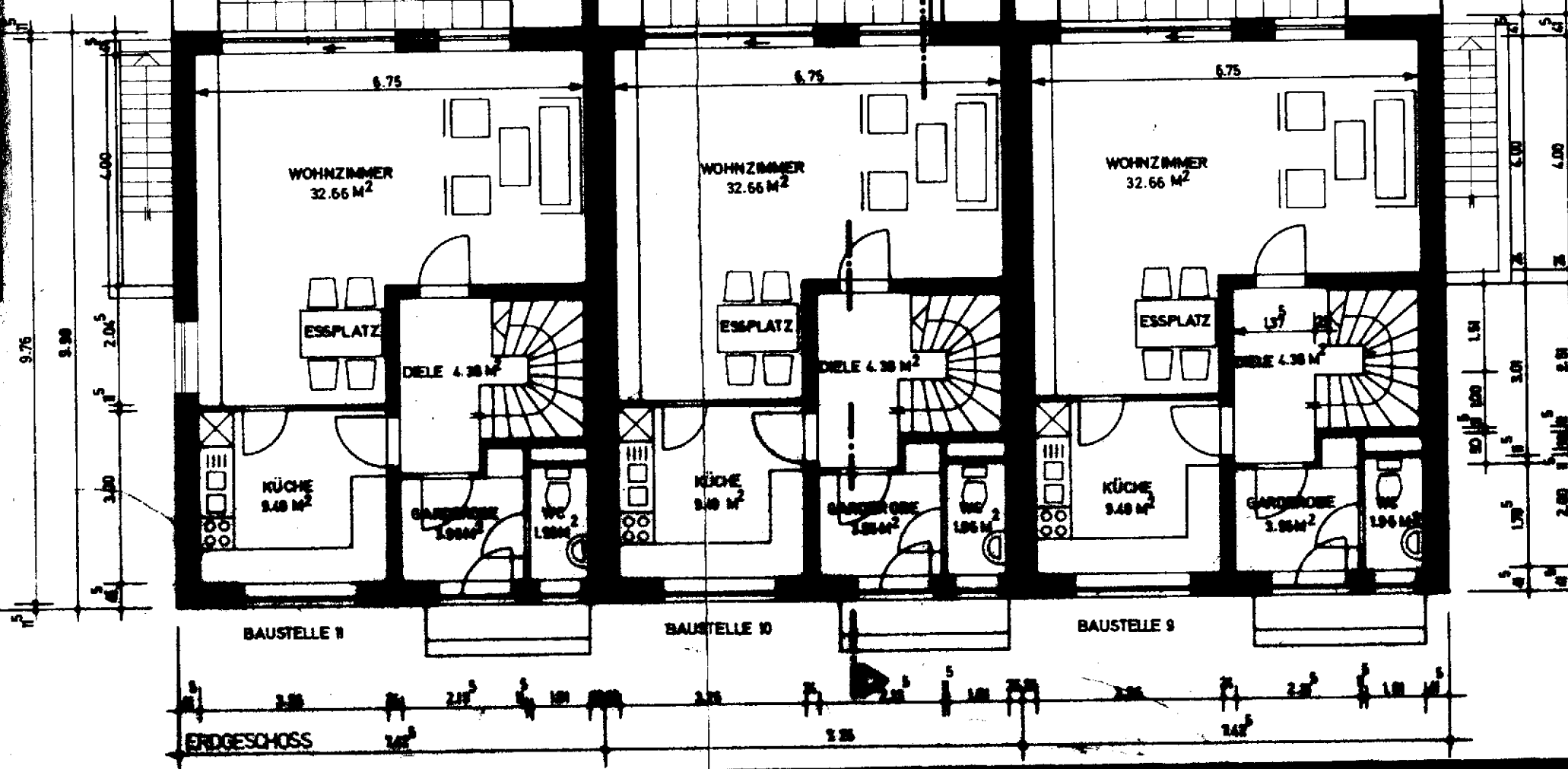


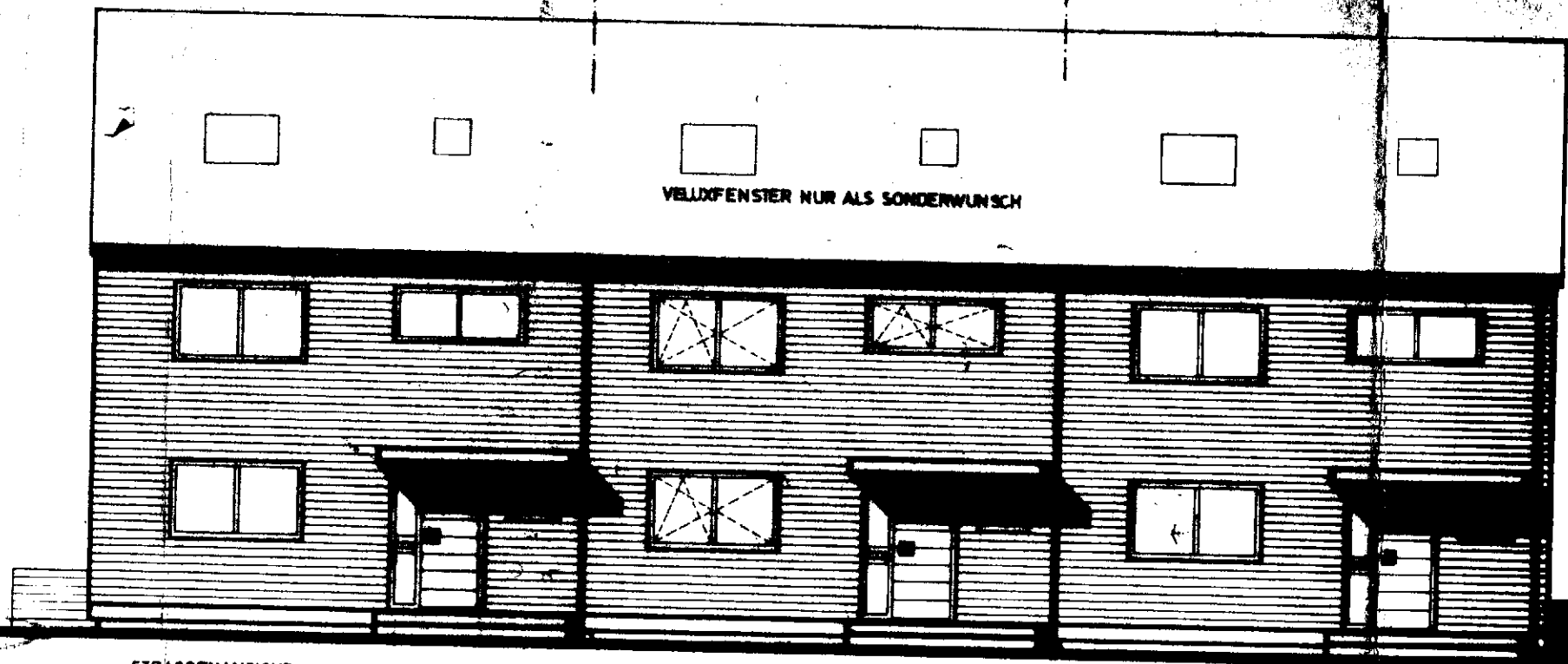
BAUSTELLE 1

BAUSTELLE 10

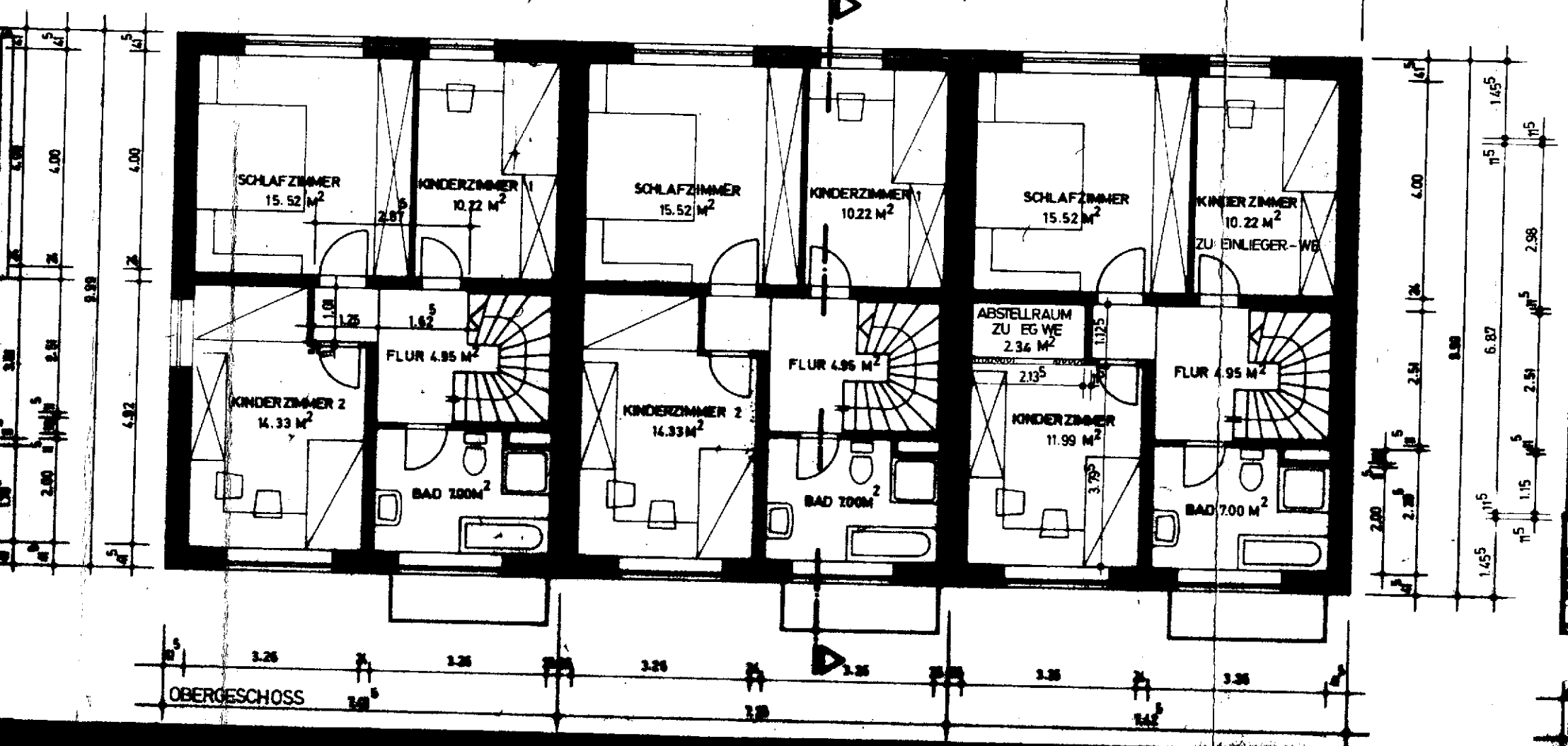
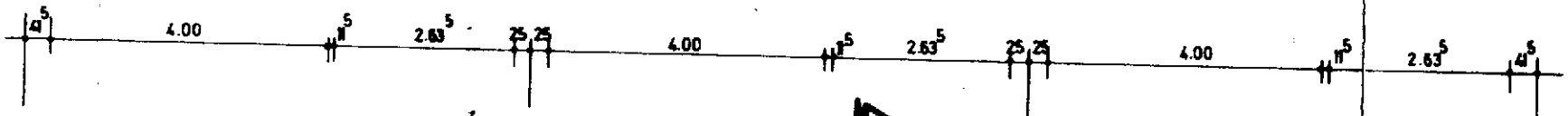
BAUSTELLE 9

ERDGESCHOSS

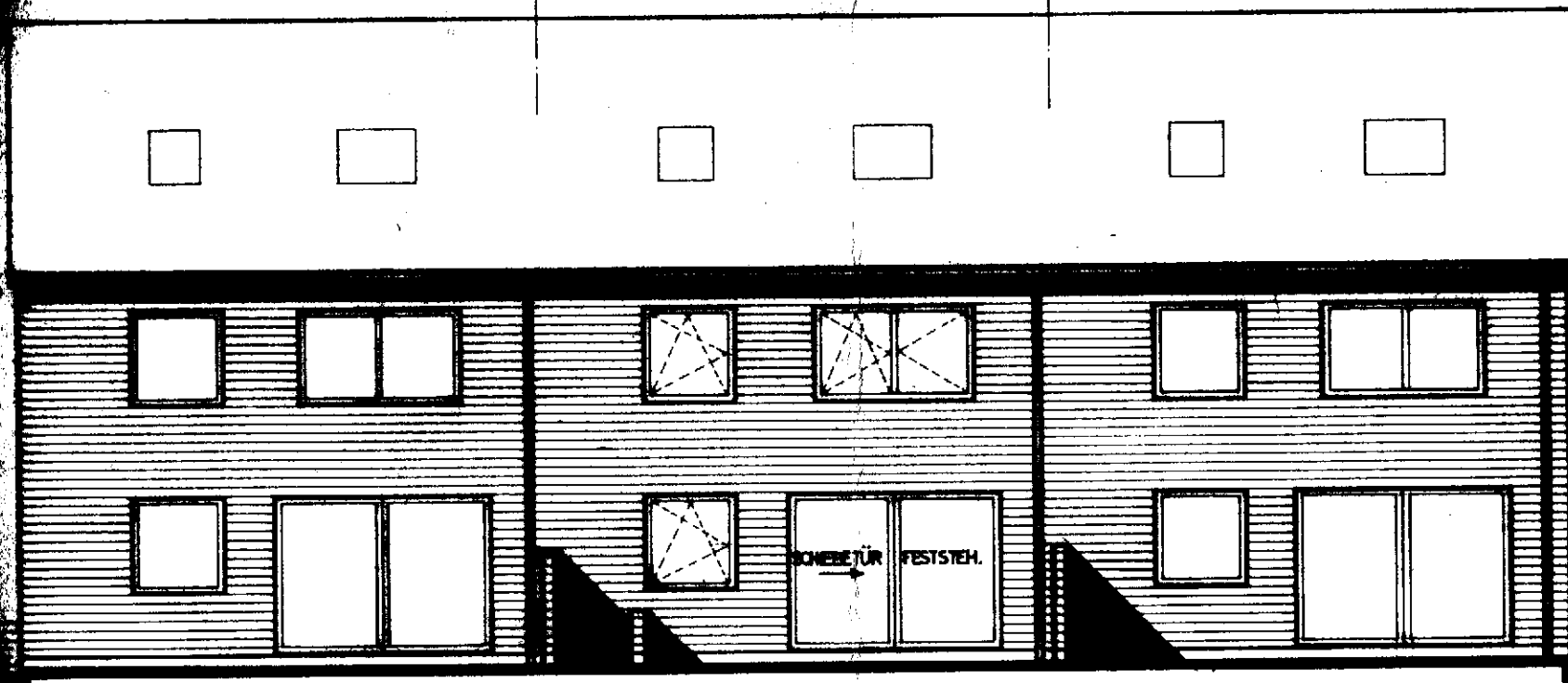




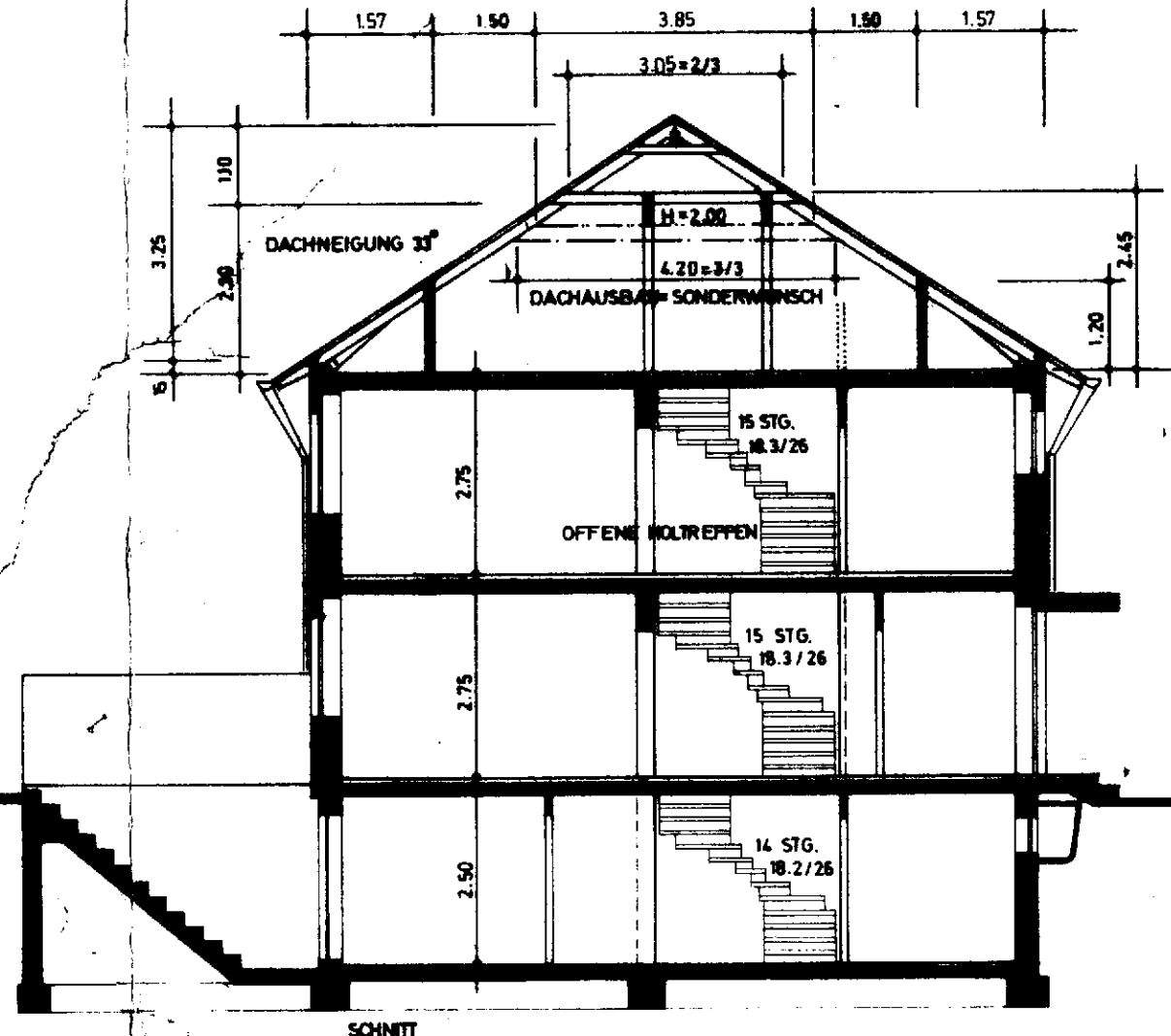
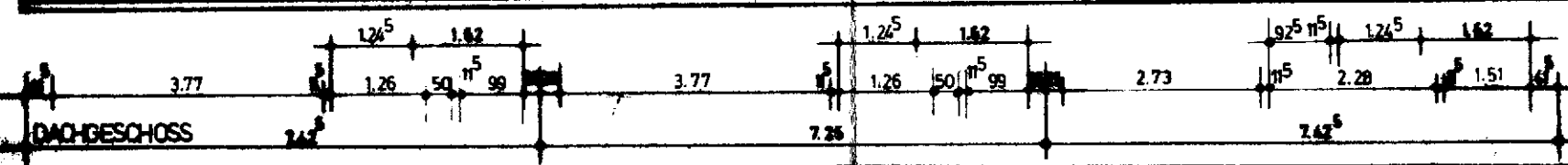
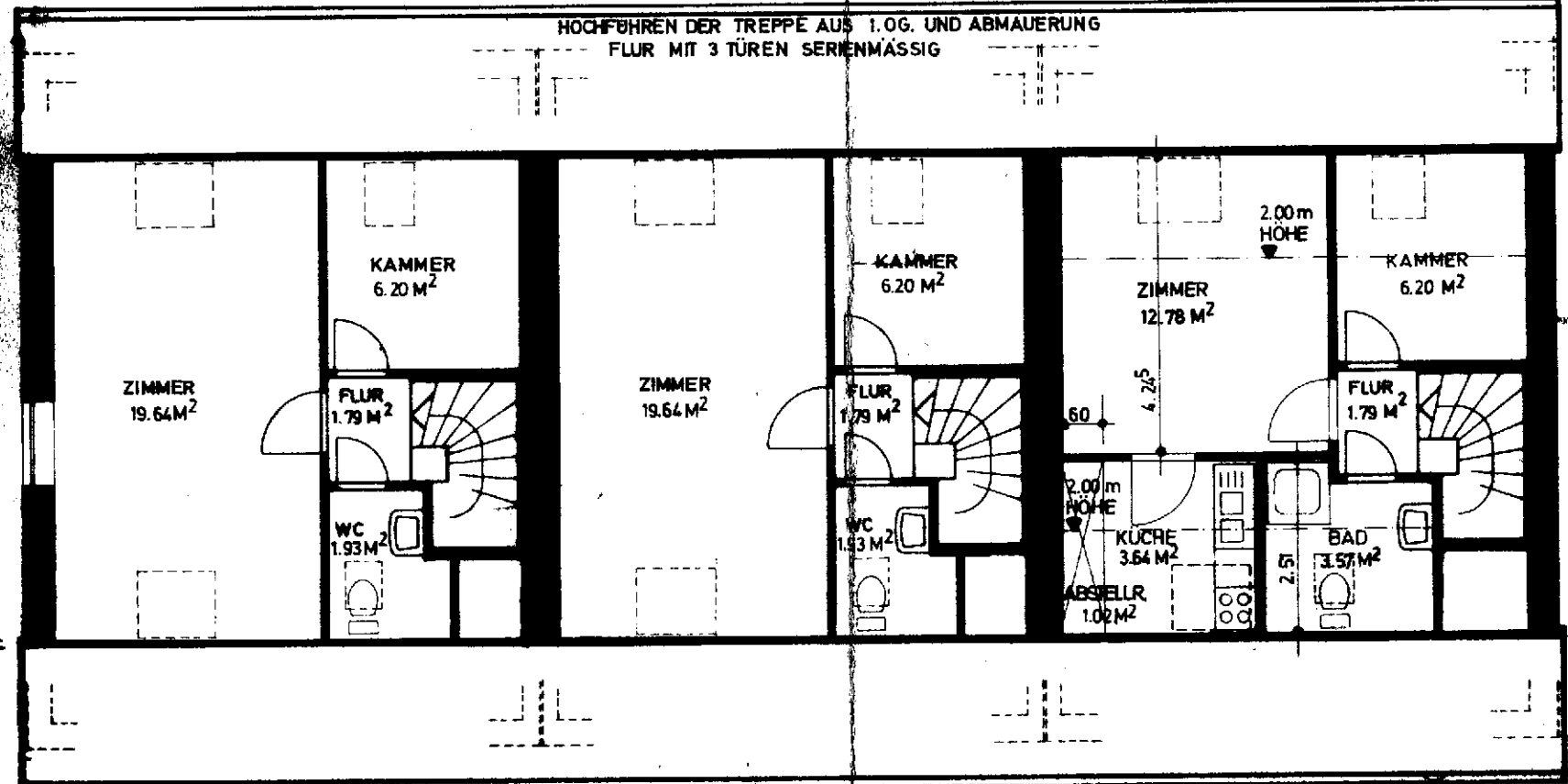
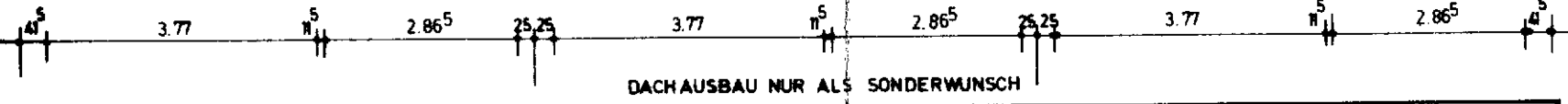
STRASSENANSICHT



OBERGESCHOSS



GARTENANSICHT



SCHNITT

PROJEKT **0673 - 0674 - 0675** HÜRTH - HERMÜLHEIM  
 PLANSTR. AN DER KRANKENHAUSSTR., BAUSTELLE 9,10,11

<b>EINFAMILIEN - REIHENHAUS</b>		MASSTAB	1:100
<b>UMBAUTER RAUM DIN 277 NOV. 1950</b>		DATUM	25.9.1979
TELAUSBAU 0673	= 609.64 m <sup>3</sup>	GEZ.	GE
VOLLAUSBAU 0673	= 689.64 m <sup>3</sup>	<b>SCHMITZ</b>	
<b>WOHNFLÄCHEN DIN 283 MÄRZ 1951</b>		BAUSTELLE 9, 0675	= 689.64 m <sup>3</sup>
TELAUSBAU 0673-0674	= 107. - m <sup>2</sup>	UMBAUTER RAUM	= 94.00 m <sup>2</sup>
VOLLAUSBAU 0673-0674	= 135. - m <sup>2</sup>	WOHNFLÄCHEN	= + 40.00 m <sup>2</sup>
		EINLIEGER - WE	134. - m <sup>2</sup>

**WBG** *Wohnungsbau-Gesellschaft für das Rheinische Braunkohle Revier GmbH*  
 FERNSPRECHER SAMMEL NR. 4801